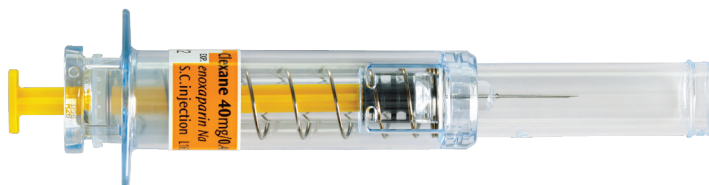


Step-by-step instructions for injecting CLEXANE® Safety Lock



CLEXANE® Safety Lock PREVENTIS syringe



CLEXANE® Safety Lock ERIS syringe

You have been prescribed **CLEXANE® Safety Lock**. Your syringe will look like either the PREVENTIS syringe, or the ERIS syringe above, though the colour may vary according to the dose you've been prescribed. If you have any questions regarding your medication or how to inject yourself, please ask your doctor.

Before injecting CLEXANE® Safety Lock

Check the label or carton to ensure the syringe has not expired. Make sure that the syringe is not damaged and that the medicine is a clear solution without particles. Do not use the syringe if it is damaged or the medicine is not clear. Use another syringe.



Wash your hands with soap and water then dry your hands.



Sit or lie in a comfortable position so you can easily see the area of your abdomen where you will be injecting. A lounge chair, recliner or bed propped up with pillows is ideal.



Select an area on the right or left side of your abdomen at least 5 cm from your belly button, towards your side.

Remember to alternate injection sides (left and right side of abdomen) for each injection.

Once you have selected an injection site, cleanse (do not rub) the injection site with an alcohol swab.



Tips for injecting CLEXANE® Safety Lock

DO

- ✓ Administer at the same time each day for exactly the number of days your doctor tells you
- ✓ Alternate injection sites (left and right side of abdomen) for each injection
- ✓ Contact your doctor immediately if you miss a dose, administer too much, or experience any side effects
- ✓ Always talk to your doctor if you have any questions or concerns about your treatment or the injection instructions
- ✓ If using the PREVENTIS syringe, remove the needle from the injection site before activating the safety lock

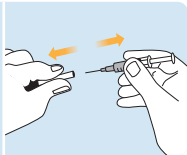
DON'T

- ✗ Activate the Safety Lock (if using the PREVENTIS syringe) until it has been removed from your skin
- ✗ Inject into bruised or scarred areas
- ✗ Pinch the skin fold too hard
- ✗ Rub the injection site after injection, as this may cause bruising

Injecting CLEXANE® Safety Lock

1. Prepare syringe

Take the protective cap off the needle. If a drop appears at the tip of the needle, remove the drop by tapping on the syringe with the needle pointing down. Do not squirt out the air bubble. If you require a dose adjustment, see dose adjustments below.†



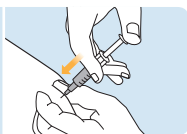
2. Pinch skin fold

Lie down or sit in a comfortable position and gently pinch a skin fold at the injection site between your thumb and index finger.



3. Inject

Insert the whole length of the needle into the skin fold at a 90° angle and press the plunger until all the medicine is injected. Do not let go of the skin fold while you are injecting.



4. Remove syringe

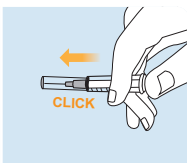
After injection, remove the needle by pulling it straight out, keeping your finger on the plunger.



5. Activate safety lock

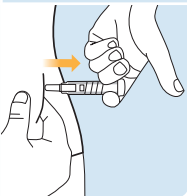
If you are using a PREVENTIS syringe:

Face the needle away from you and others, and activate the safety lock by firmly pushing the plunger. The protective sleeve will automatically cover the needle and you will hear an audible “click”.



If you are using an ERIS syringe:

When you remove the needle from the injection site, a protective sleeve will automatically cover the needle. You can now let go of the skin fold. The safety system only releases the protective sleeve when the syringe has been emptied by pressing the plunger all the way down.



6. Disposal

Drop the used syringe into the sharps container. Close the lid tightly and place the container out of reach of children. When the container is full, give it to your doctor or nurse for disposal. Return any unused medicine to your pharmacist. **DO NOT dispose in your household rubbish.**



†DOSE ADJUSTMENTS: If your doctor has instructed you to adjust your dose of CLEXANE® Safety Lock, you will need to squirt out any excess medicine into an appropriate container before injection. Hold the syringe pointing down and press the plunger so that the bottom of the air bubble is level with the marking on the syringe that corresponds to the dose prescribed by your doctor. If the excess medicine is not squirted out before injection, the safety lock will not be activated at the end of injection.



For further information about **CLEXANE® Safety Lock**, please review the CLEXANE® Consumer Medicine Information at https://medsinfo.com.au/consumer-information/document/Clexane_CMI and visit:

www.vtematters.com.au/resources

Password: support

(Please note that the password is case sensitive)



Scan the QR code to access information on CLEXANE®, including videos on how to inject **CLEXANE® Safety Lock** at home. Use the password "support" to access this information.

For Sanofi Medical Information,
call 1800 818 806

Please contact your healthcare professional if you have questions about CLEXANE® or your condition.

Reference: 1. CLEXANE® and CLEXANE® Forte Instructions for Use, Sanofi, 2025.

sanofi-aventis australia Pty Ltd trading as Sanofi, ABN 31 008 558 807,
International Tower 3, Level 23, 300 Barangaroo Avenue, Sydney NSW 2000
CLEXANE® is a registered trademark for Sanofi-Aventis.
MAT-AU-2600872 - 05/2026.

sanofi